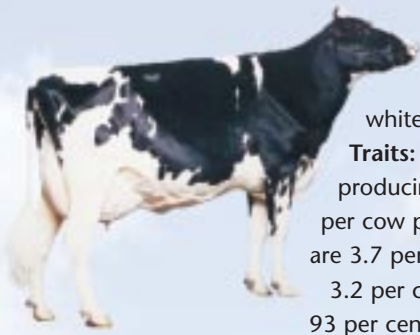


# BREEDS OF DAIRY CATTLE



## Holstein

**Origin:** The Netherlands

**Appearance:** Black and white, occasionally red and white.

**Traits:** Superior milk production, producing on average 8,500 litres per cow per year; milk components are 3.7 per cent butterfat and 3.2 per cent protein; makes up 93 per cent of the provincial herd.



## Jersey

**Origin:** Isle of Jersey, English Channel

**Appearance:**

Ranging from light to dark brown, occasionally with some white spots.

**Traits:** Earliest maturing dairy breed, producing on average 6,000 litres per cow per year; highest milk components (4.8 per cent butterfat and 3.8 per cent protein); makes up four per cent of the provincial herd.

## Guernsey

**Origin:** Isle of Guernsey, English Channel

**Appearance:** Orange-red colour, often with white legs and white areas on the body.

**Traits:** Noted for their rich golden coloured milk, due to Carotene and Vitamin A in their diets;

produce on average 6,400 litres per cow per year; second highest milk components (4.3 per cent butterfat and 3.5 per cent protein); represents less than one per cent of the provincial herd.



## Ayrshire

**Origin:** Scotland

**Appearance:** Rusty-red and white.

**Traits:** Known as the "aristocrat of dairy breeds" due to their size; produce on average 6,600 litres of milk per cow per year; milk components are 3.9 per cent butterfat and 3.3 per cent protein; makes up less than two per cent of the provincial herd.



## Milking Shorthorn

**Origin:** England

**Appearance:** White and roan.

**Traits:** Considered a dual purpose breed (can be used for milk production and beef); produce on average 6,100 litres per cow per year; milk components are 3.8 per cent butterfat and 3.4 per cent protein; represents less than one per cent of the provincial herd.



## Brown Swiss

**Origin:** Alps of Switzerland

**Appearance:** Vary in colour from silver to dark brown.

**Traits:** Known for their strength and ruggedness, producing on average 7,000 litres per cow per year; milk components are 3.9 per cent butterfat and 3.5 per cent protein; represents less than one per cent of the provincial herd.



Ayrshire Ontario • Brown Swiss Association of Ontario • Canadian Milking Shorthorn Society  
Guernsey Cattle Breeders' Association of Ontario • Ontario Holstein Association • Jersey Ontario